

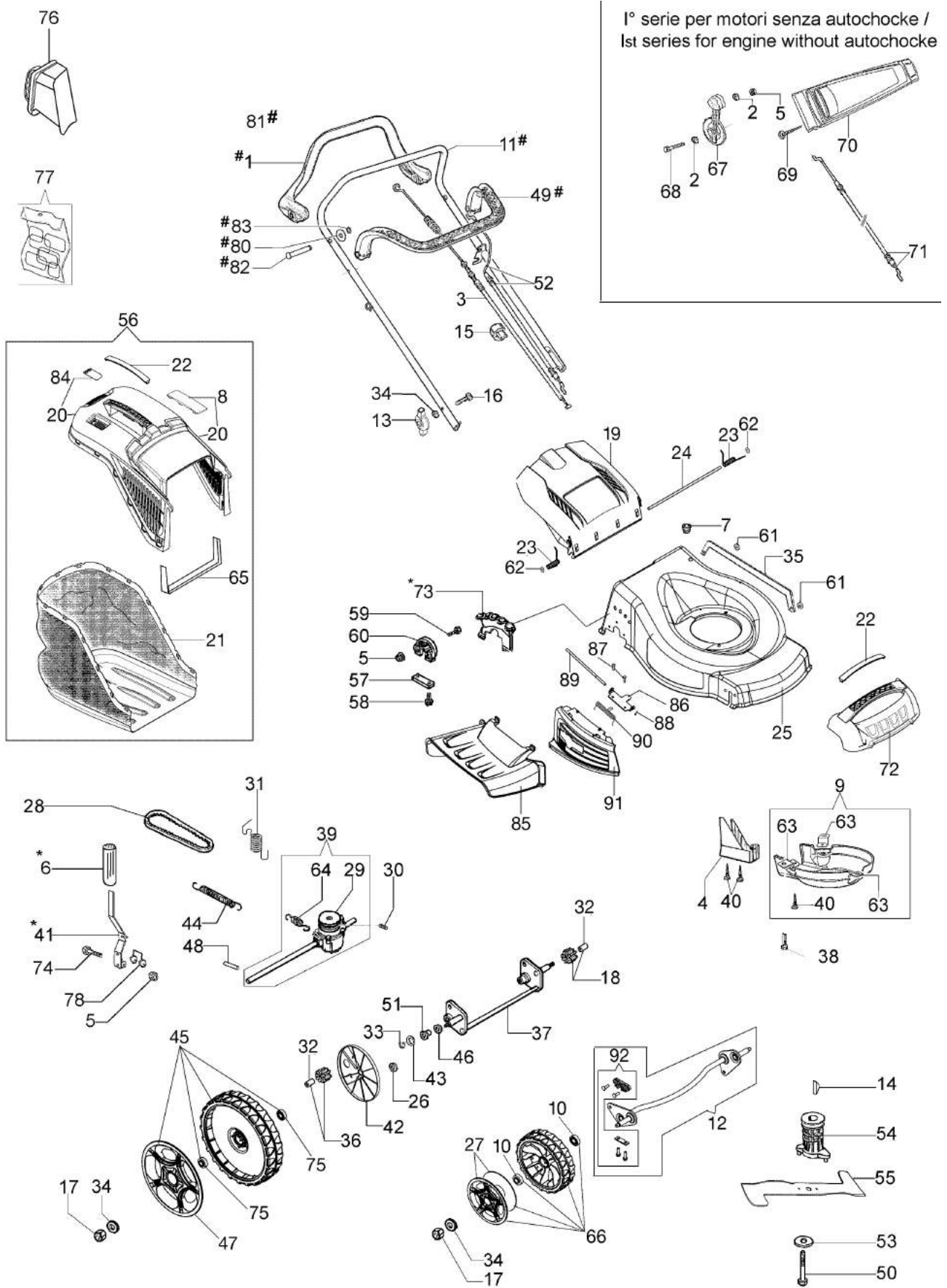
## LR 53 THX ALLROAD PLUS 4 Lawnmower



### Документы

[Illustrated parts list](#)

---



## изображение Illustrated parts list

Ref.Nu	Qty	Part number	Description	Validity from	Validity till	Notes	Bulletin
1	1	66060398BR	Traction lever				
2	2	3918009R	Washer				
3	1	66060058CR	Traction cable				
4	1	66071090	Guard	SN 6193092975			BT5-072-04/13
5	7	3914006R	Nut				
6	1	66070954R	Handle				
7	1	66030038	Grommet				
8	1	66070466R	Lock				
9	1	66070233A	Guard kit				
10	4	3035023R	Bearing	10/14			
10	4	66030081R	Bearing		09/14		
11	1	66060421BR	Handlebar				
12	1	66070749	Axle kit	SN 6195022908			BT5-080-03/15
13	2	66070317R	Tightening handle				
14	1	66060380R	Key				
15	2	66060231R	Band				
16	2	3910015R	Screw				
17	4	3914012R	Nut				
18	1	66070437R	Left sprocket	SN 6195164910			BT5-082-04/15
19	1	66110753R	Shutter				
20	1	66072047R	Frame				
21	1	66070455R	Grassbag				
22	2	66070522R	Cover				
23	1	66110609A	Kit spring				
24	1	66110026R	Deflector axle				
25	1	66070537AR	Deck				
26	2	3916015R	Washer				
27	2	66070727R	Wheel cover	10/14			
27	2	66070573R	Wheel cover		09/14		
28	1	3047027R	Belt	SN 6194200046			BT5-076-05/14,
28	1	3047025R	Belt				BT5-077-06/14
29	1	66071084R	Pulley				
30	1	3022020R	Plug				
31	1	66070035BR	Spring				
32	2	66070435R	Bushing	SN 6195164910			BT5-082-04/15
33	4	3024012R	Snap ring				
34	7	3916008R	Washer				
35	1	66070229	Rod				
36	1	66070436R	Right sprocket	SN 6195164910			BT5-082-04/15
37	1	66070287AR	Rear axle				
38	3	3806076R	Screw				
39	1	66070017ER	Transmission				
40	5	011200035R	Screw				
41	1	66070286CR	Lever				

## изображение Illustrated parts list

Ref.Nu	Qty	Part number	Description	Validity from	Validity till	Notes	Bulletin
42	2	66070469R	Wheel cover		09/14		
42	2	66070756	Wheel cover	10/14			
43	1	66030044	Spacer				
44	1	66070036R	Spring				
45	2	66060526	Wheel kit		09/14		
45	2	66070729	Wheel kit	10/14			
46	2	8202311R	Ring				
47	2	66070574R	Wheel cover		09/14		
47	2	66070726R	Wheel cover	10/14			
48	1	66060010R	Roller				
49	1	66060316AR	Brake lever				
50	1	3906150R	Screw				
51	2	66060030R	Bushing				
52	1	66030276R	Engine break cable				
53	1	66060384R	Washer				
54	1	66070232R	Hub Ø25mm				
54	1	66030256R	Hub Ø22,2mm				
55	1	66070440R	Mulching blade				
56	1	66070905	Grassbag kit				
57	2	66030039	Plate				
58	4	3960031R	Screw				
59	6	3801022R	Screw				
60	2	66110781R	Support				
61	2	3045035R	Retainer washer				
62	2	3045034R	Retainer washer				
63	3	66070228AR	Support				
64	1	66070980R	Spring				
65	1	66070133R	Support				
66	2	66070730	Wheel kit		09/14		
66	2	66070730	Wheel kit	10/14			
67	1	66070341AR	Throttle lever				
68	1	3910019	Screw				
69	2	3960072	Screw				
70	1	66070128R	Dashboard			sostituito da particolare	
71	1	66070136R	Throttle cable				
72	1	66070488R	Guard			replaced by an	
73	1	66070291R	Sector				
74	1	3906164R	Screw				
75	4	66030081R	Bearing		09/14		
75	4	3035023R	Bearing	10/14			
76	1	66071059R	Mulching cap				
77	1	66070629A	Labels kit				
78	1	8203374R	Spring				
79	1	66070439A	Lever group				

## изображение Illustrated parts list

Ref.Nu	Qty	Part number	Description	Validity from	Validity till	Notes	Bulletin
80	2	3064037R	Washer				
81	1	66060425R	Handle kit				
82	2	66060381BR	Pin				
83	2	3024006R	Snap ring				
84	1	66070521R	Shutter				
85	1	66070479R	Deflector				
86	1	66070804R	Support				
87	2	3032018R	Rivet				
88	1	3045034R	Retainer washer				
89	1	66071060R	Pin				
90	1	66070493R	Spring				
91	1	66070478AR	Shutter				
92	1	66070744	Support set	SN 6195022908			BT5-080-03/15