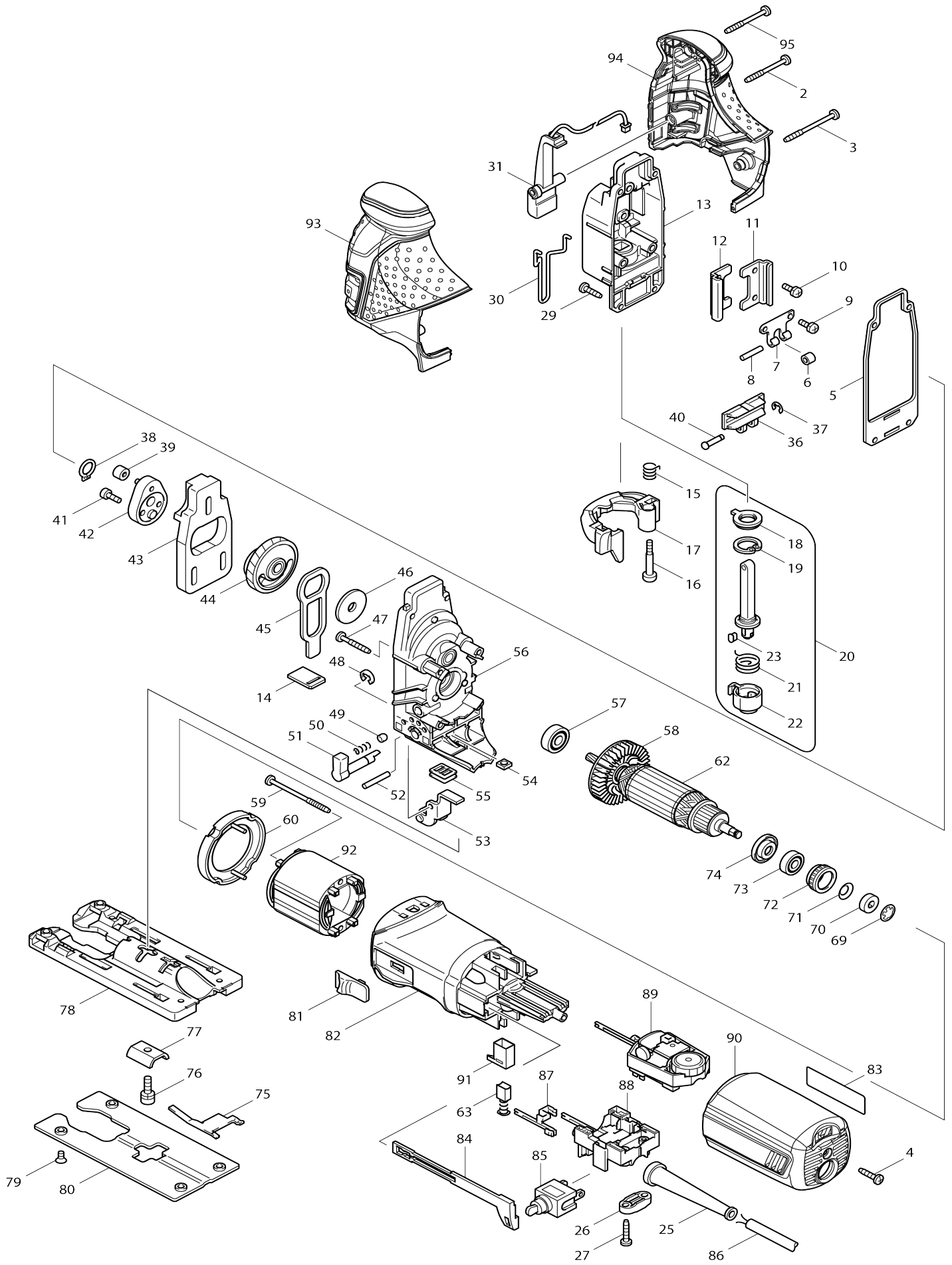


Model No.4351FCT JIG SAW



Model No.4351FCT JIG SAW

| Item No. | Parts No. | Description | Interchangability | Q'ty | New/Old | Note1 | Note2 |
|----------|-----------|-----------------------------|-------------------|------|---------|-------|-------|
| 002 | 266048-4 | TAPPING SCREW 4X40 | | 1 | | | |
| 003 | 266091-3 | TAPPING SCREW 4X50 | | 1 | | | |
| 004 | 265995-6 | TAPPING SCREW 4X18 | | 1 | | | |
| 005 | 442138-9 | PACKING | | 1 | | | |
| 006 | 214031-5 | PLANE BEARING 4 | | 1 | | | |
| 007 | 232207-2 | LEAF SPRING | | 1 | | | |
| 008 | 256117-9 | PIN 4 | | 1 | | | |
| 009 | 911111-5 | PAN HEAD SCREW M4X10 WITH W | | 2 | | | |
| 010 | 911111-5 | PAN HEAD SCREW M4X10 WITH W | | 2 | | | |
| 011 | 345240-6 | LINEAR GUIDE | | 1 | | | |
| 012 | 345240-6 | LINEAR GUIDE | | 1 | | | |
| 013 | 153338-3 | GEAR HOUSING COVER COMPLETE | | 1 | | | |
| C10 | 253313-0 | THIN WASHER 14 | | 1 | | | |
| C20 | 257250-0 | RING 20 | | 1 | | | |
| C30 | 421815-6 | DUST SEAL 8 | | 1 | | | |
| 014 | 417839-8 | SEAL PLATE | | 1 | | | |
| 015 | 231659-4 | TORSION SPRING 6 | | 1 | | | |
| 016 | 265026-1 | + PAN HEAD SCREW M4 | | 1 | | | |
| 017 | 419820-5 | TOOL OPENER | | 1 | | | |
| 018 | 421817-2 | DUST COVER | | 1 | | | |
| 019 | 962068-3 | RETAINING RING R-18 | | 1 | | | |
| 020 | 135060-4 | ROD ASS'Y | | 1 | | | |
| C10 | 165326-8 | ROD | | 1 | | | |
| D10 | | INC. 18,19,21-23 | | | | | |
| 021 | 231660-9 | TORSION SPRING 15 | | 1 | | | |
| 022 | 310136-0 | BLADE HOLDER | | 1 | | | |
| 023 | 310135-2 | PUSH PIN | | 1 | | | |
| 025 | 682559-5 | CORD GUARD 8 | | 1 | | | |
| 026-1 | 687063-9 | CORD CLAMP | | 1 | | | |
| 027 | 265995-6 | TAPPING SCREW 4X18 | | 2 | | | |
| 029 | 266034-5 | TAPPING SCREW CT 4X16 | | 4 | | | |
| 030 | 324233-6 | SAFETY WIRE | | 1 | | | |
| 031 | 631470-8 | LED CIRCUIT | | 1 | | | |
| 036 | 310134-4 | SLIDER | | 1 | | | |
| 037 | 961017-7 | STOP RING E-3 | | 1 | | | |
| 038 | 961004-6 | RETAINING RING (EXT) S-8 | | 1 | | | |
| 039-1 | 212092-9 | NEEDLE BEARING 407 | | 1 | | | |
| 040 | 268090-1 | PIN 4 | | 1 | | | |
| 041 | 265353-6 | HEX. SOCKET HEAD BOLT M4X12 | | 2 | | | |
| 042 | 153336-7 | CRANK COMPLETE | | 1 | | | |
| 043 | 313108-4 | BALANCE PLATE | | 1 | | | |
| 044 | 153335-9 | GEAR COMPLETE | | 1 | | | |
| C10 | 212043-2 | NEEDLE BEARING 810 | | 2 | | | |
| 045 | 345235-9 | PUSH PLATE | | 1 | | | |
| 046 | 253877-4 | FLAT WASHER 8 | | 1 | | | |

| | | | | | | |
|-------|----------|------------------------------|---|---|---|--|
| 047 | 266050-7 | TAPPING SCREW 4X30 | | 4 | | |
| 048 | 961018-5 | STOP RING E-5 | | 1 | | |
| 049 | 286032-3 | CAP 5 | | 1 | | |
| 050 | 233139-6 | COMPRESSION SPRING 3 | | 1 | | |
| 051-1 | 272280-0 | LEVER 17 | | 1 | | |
| 052 | 268063-4 | PIN 4 | | 1 | | |
| 053 | 153334-1 | RETAINER COMPLETE | | 1 | | |
| 054 | 252171-1 | SQUARE NUT M5-8 | | 1 | | |
| 055 | 421816-4 | DUST SEAL | | 1 | | |
| 056 | 153337-5 | GEAR HOUSING COMPLETE | | 1 | | |
| 057 | 210005-4 | BALL BEARING 608DDW | | 1 | | |
| 058 | 241881-5 | FAN 52 | | 1 | | |
| 059 | 266052-3 | TAPPING SCREW 4X60 | | 2 | | |
| 060 | 417838-0 | BAFFLE PLATE | | 1 | | |
| 062 | 517398-3 | ARMATURE ASS'Y 220-240V | | 1 | | |
| D10 | | INC. 57,58,73,74 | | | | |
| 063 | 195015-1 | CARBON BRUSH SET CB-419 | | 1 | | |
| 069 | 259039-2 | SELF LOCK 6 | | 1 | | |
| 070 | 688117-5 | MAGNET SLEEVE | | 1 | | |
| 071 | 267756-0 | WAVE WASHER 6 | | 1 | | |
| 072 | 421494-0 | RUBBER RING 19 | | 1 | | |
| 073 | 211021-9 | BALL BEARING 607LLB | | 1 | | |
| 074 | 681636-0 | INSULATION WASHER | | 1 | | |
| 075 | 232208-0 | LEAF SPRING | | 1 | | |
| 076 | 922226-3 | HEX. SOCKET HEAD BOLT M5X18 | | 1 | | |
| 077 | 345237-5 | CRANK PLATE | | 1 | | |
| 078 | 317565-8 | BASE | | 1 | | |
| 079 | 912107-9 | COUNTERSUNK HEAD SCREW M4 X8 | | 4 | | |
| 080 | 345238-3 | BASE PLATE | | 1 | | |
| 081 | 417840-3 | SWITCH LEVER | | 1 | | |
| 082 | 419893-8 | MOTOR HOUSING | | 1 | | |
| 083 | 863690-8 | 4351FCT NAME PLATE | | 1 | | |
| 084 | 417841-1 | SWITCH ROD | | 1 | | |
| 085 | 651428-1 | SWITCH STL115ADF-CD | | 1 | * | |
| 085-1 | 651069-3 | SWITCH ST115A-TB-F2 | O | 1 | | |
| 086 | 692021-2 | POWER SUPPLY CORD 1.0-2-2.5 | | 1 | | |
| 087 | 654223-8 | TERMINAL F | | 2 | | |
| 088 | 638110-9 | SWITCH BLOCK UNIT | | 1 | | |
| 089 | 631769-1 | CONTROLLER | | 1 | | |
| 090 | 419896-2 | REAR COVER | | 1 | | |
| 091 | 643975-6 | BRUSH HOLDER | | 2 | | |
| 092 | 633518-2 | FIELD 220-240V | | 1 | | |
| 093 | 188290-6 | HEAD COVER SET | | 1 | | |
| D10 | | INC. 94 | | | | |
| 094 | 188290-6 | HEAD COVER SET | | 1 | | |
| D10 | | INC. 93 | | | | |
| 095 | 266048-4 | TAPPING SCREW 4X40 | | 1 | | |
| A01 | 415524-7 | ANTI-SPLINTERING DEVICE | | 1 | | |
| A02 | 417852-6 | COVER PLATE | | 1 | | |
| A03-1 | A-85737 | JIGSAW BLADE NO.B22 | | 1 | | |
| A04-1 | A-85628 | JIGSAW BLADE NO.B10 | | 1 | | |

| | | | | | | |
|-------|----------|-----------------------------|---|---|--|--|
| A05-1 | A-85793 | JIGSAW BLADE NO.BR13 | | 1 | | |
| A06 | 783202-0 | HEX. WRENCH 4 | | 1 | | |
| A07 | 824809-4 | PLASTIC CARRYING CASE | | 1 | | |
| A08 | 417853-4 | DUST NOZZLE | | 1 | | |
| F01 | 192516-0 | GUIDE RAIL | | 1 | | |
| F02 | 192557-6 | ANTI-SPLITTING DEVICE | | 1 | | |
| F04 | 193516-3 | GUIDE RULE SET | | 1 | | |
| C10 | 165217-3 | GUIDE RULE | | 1 | | |
| C20 | 271601-3 | KNOB 20 | | 1 | | |
| C30 | 323802-0 | GUIDE PIN | | 1 | | |
| C40 | 922207-7 | HEX. SOCKET HEAD BOLT M5X10 | | 1 | | |
| F05-1 | 193517-1 | GUIDE RAIL ADAPTER SET | O | 1 | | |
| C11 | 265785-7 | THUMB SCREW M5X10 | < | 1 | | |
| C20 | 347393-7 | RULE BAR | | 1 | | |
| C30 | 417894-0 | GUIDE RAIL ADAPTER | | 1 | | |
| F06 | 194416-0 | SHEET 10000 SET | | 1 | | |
| F07 | 194417-8 | RUBBER SHEET 10000 SET | | 1 | | |
| F08 | 194418-6 | POSITION SHEET 1400 SET | | 1 | | |
| F10 | 194367-7 | GUIDE RAIL 3000 SET | | 1 | | |
| C10 | 413102-7 | SEAT 3000 | | 2 | | |
| C20 | 423360-7 | POSITION SHEET 3000 | | 1 | | |
| C30 | 423362-3 | RUBBER SEAT 3000 | | 2 | | |
| C40 | 819212-2 | MAKITA LOGO LABEL | | 1 | | |
| F11 | 194368-5 | GUIDE RAIL 1400 SET | | 1 | | |
| C10 | 413101-9 | SEAT 1400 | | 2 | | |
| C20 | 423359-2 | POSITION SHEET 1400 | | 1 | | |
| C30 | 423361-5 | RUBBER SEAT 1400 | | 2 | | |
| C40 | 819212-2 | MAKITA LOGO LABEL | | 1 | | |
| F12 | 194925-9 | GUIDE RAIL 1900 SET | | 1 | | |
| C10 | 423386-9 | POSITION SHEET 1900 | | 1 | | |
| C20 | 423390-8 | RUBBER SHEET 1900 | | 2 | | |
| C30 | 451330-6 | SHEET 1900 | | 2 | | |
| C40 | 819212-2 | MAKITA LOGO LABEL | | 1 | | |
| F13 | 194910-2 | POSITION SHEET 1900 SET | | 1 | | |
| F15-2 | 197252-3 | GUIDE RAIL ADAPTER SET | O | 1 | | |
| F16 | 199140-0 | GUIDE RAIL 1000 SET | | 1 | | |
| F17 | 199141-8 | GUIDE RAIL 1500 SET | | 1 | | |

Please state Parts No. when your order.

Print Date 06/20/2024