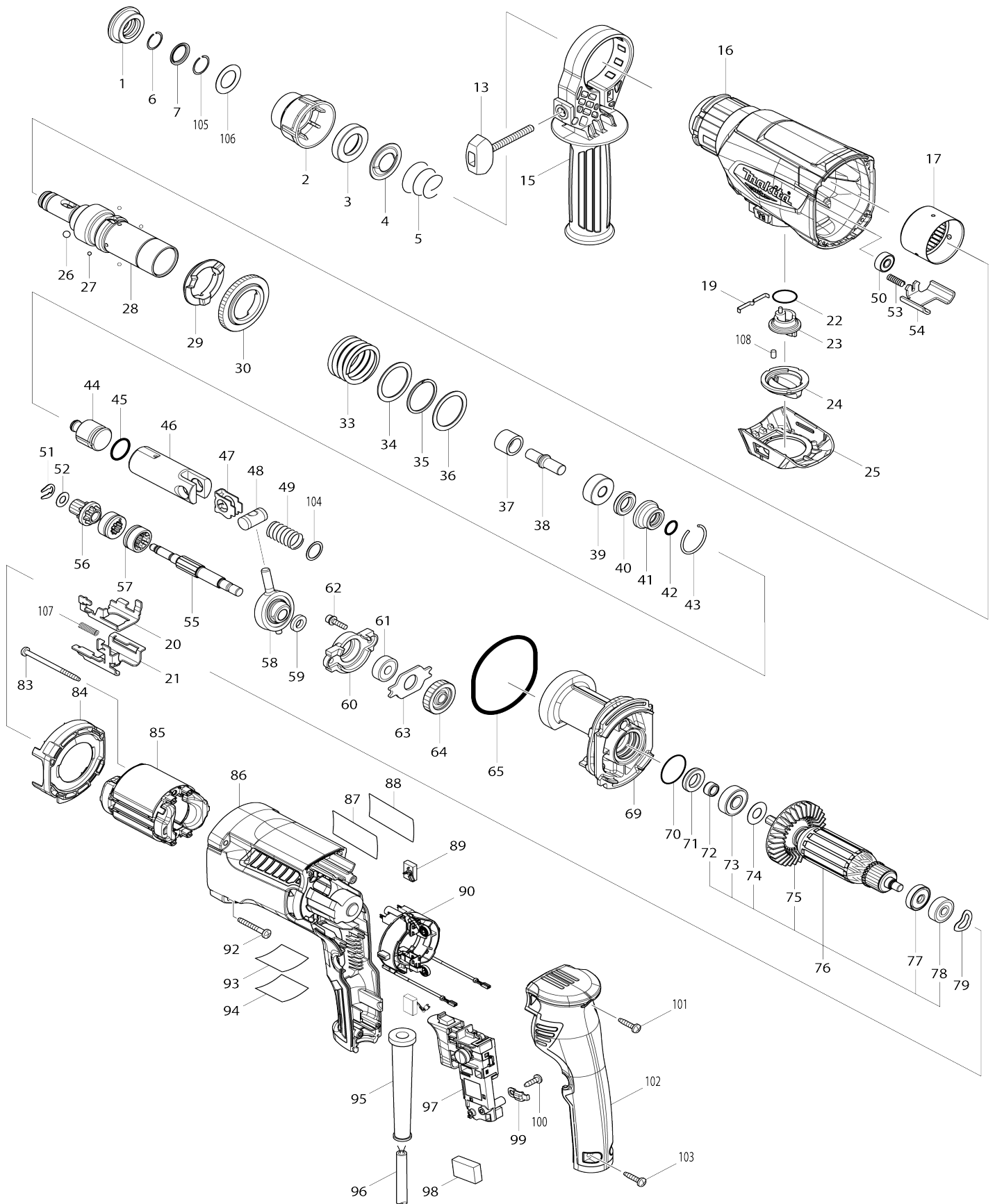


Model No.M8701 26MM COMBINATION HAMMER



Model No.M8701 26MM COMBINATION HAMMER

Item No.	Parts No.	Description	Interchangability	Q'ty	New/Old	Note1	Note2
001	286288-8	CAP 35		1			
002	456529-8	CHUCK COVER		1			
003	325813-1	RING 21		1			
004	346177-0	GUIDE WASHER		1			
005	233916-6	CONICAL COMP. SPRING 21-29		1			
006	233989-9	RING SPRING 14		1			
007	346834-0	WASHER 16		1			
013	265795-4	THUMB SCREW M6X52		1			
015	452985-0	GRIP 34		1			
016	144216-8	GEAR HOUSING COMPLETE		1			
C10	213636-8	OIL SEAL 25		1			
017	143962-0	NEEDLE BEARING COMPLETE		1			
019	232286-0	LEAF SPRING		1			
020	347000-2	CHANGE PLATE B		1			
021	346999-8	CHANGE PLATE A		1			
022	213278-8	O RING 17		1			
023	455392-6	CHANGE LEVER		1			
024	455394-2	CHANGE LEVER CAP		1			
025	456528-0	CHANGE LEVER COVER		1			
026	216022-2	STEEL BALL 7.0		2			
027	216019-1	STEEL BALL 3		4			
028	144215-0	TOOL HOLDER COMPLETE		1			
C10	213344-1	OIL SEAL 9		1			
029	332139-4	DRIVING FLANGE		1			
030	227360-7	SPUR GEAR 51		1			
033	231899-4	COMPRESSION SPRING 31		1			
034	267153-0	FLAT WASHER 30		1			
035	257932-4	SPIRO LOCK WASHER 30		1			
036	267153-0	FLAT WASHER 30		1			
037	325782-6	SLEEVE 9A		1			
038	325789-2	IMPACT BOLT A		1			
039	325794-9	RING 10A		1			
040	424267-0	CUSHION RING 12		1			
041	325798-1	O-RING CASE A		1			
042	213073-6	O RING 9		1			
043	233979-2	RING SPRING 28		1			
044	325784-2	STRIKER		1			
045	213258-4	O RING 17.5		1			
046	310345-1	PISTON CYLINDER		1			
047	346036-8	GUIDE PLATE		1			
048	324215-8	PISTON JOINT		1			
049	234098-7	COMPRESSION SPRING 14		1			
050	210137-7	BALL BEARING 606ZZ		1			
051	257336-0	STOP RING EXT U-6		1			
052	253186-1	FLAT WASHER 7		1			
053	233360-7	COMPRESSION SPRING 4		1			
054	346998-0	LOCK PLATE		1			

055	326448-1	CAM SHAFT		1		
056	227359-2	SPUR GEAR 10		1		
057	310678-4	CLUTCH CAM		2		
058	219021-3	SWASH BEARING 10		1		
059	257321-3	RING 8		1		
060	310344-3	BEARING BOX		1		
061	210046-0	BALL BEARING 608ZZ		1		
062	266437-3	HEX. SOCKET HEAD BOLT M4X16		2		
063	285735-6	BEARING RETAINER		1		
064	227748-1	HELICAL GEAR 27		1		
065	213727-5	O-RING 63		1		
069	141664-2	INNER HOUSING COMPLETE		1		
C10	443153-6	FELT		1		
070	213407-3	O RING 26		1		
071	213678-2	OIL SEAL 12		1		
072	262571-7	SLEEVE 8		1		
073	211480-7	BALL BEARING 6000ZZ		1		
074	267213-8	FLAT WASHER 10		1		
075	240084-8	FAN 60		1		
076	513944-0	ARMATURE ASS'Y 240V		1		
D10		INC. 72-75,77,78				
077	681652-2	INSULATION WASHER		1		
078	210050-9	BALL BEARING 627ZZ		1		
079	267804-5	WAVE WASHER 15		1		
083	266334-3	TAPPING SCREW 4X60		2		
084	452984-2	BAFFLE PLATE		1		
085	633793-0	FIELD 220-240V		1		
086	452979-5	MOTOR HOUSING		1	*	
086-1	413S68-5	MOTOR HOUSING	>	1		
087	852T28-2	M8701 NAME PLATE		1		
088	890304-6	CLEAR LABEL		1	*	
089	194722-3	CARBON BRUSH CB-459		1	*	
089-1	195026-6	CARBON BRUSH SET CB-459	O	1		
090	638747-2	BRUSH HOLDER UNIT		1		
092	266361-0	TAPPING SCREW 4X30		4		
093	852T30-5	M8701 SERIAL NO. LABEL		1		
094	890297-7	CLEAR LABEL		1	*	
095	682566-8	CORD GUARD 10		1		
096	695490-6	POWER SUPPLY CORD 1.0-2-4.0		1	*	
096-1	665890-4	POWER SUPPLY CORD 1.0-2-4.0	O	1		
097	650671-9	SWITCH TG853TB-1C		1	*	
097-1	650671-9	SWITCH TG853TB-1C	O	1		
098	645190-8	NOISE SUPPRESSOR		1	*	
098-1	645267-9	NOISE SUPPRESSOR	O	1		
099	687682-1	STRAIN RELIEF		1		
100	266385-6	TAPPING SCREW 4X14		1		
101	266326-2	TAPPING SCREW 4X18		1		
102	452981-8	HANDLE COVER		1	*	
102-1	413S72-4	HANDLE COVER	<	1		
103	266326-2	TAPPING SCREW 4X18		2		
104	267447-3	FLAT WASHER 14		1		
105	233992-0	RING SPRING 15		1		

106	267114-0	FLAT WASHER 17		1		
107	231900-5	COMPRESSION SPRING 5		1		
108	263005-3	RUBBER PIN 6		1		
A01	321144-6	DEPTH GAUGE		1		
A02	821660-3	PLASTIC CARRYING CASE		1		
C10	452432-1	SLIDE LATCH		2		
C20	806G57-9	MAKITA MT LOGO LABEL		1		
A03	810V59-9	M8701 PLASTIC CASE LABEL		2		
B01	198221-7	HAMMER SERVICE KIT (FOR HIGH)		1		
C10	195127-0	OIL VESSEL SET		2		
D10		INC. 6,26,40,42,43,45,89,105				

Please state Parts No. when your order.

Print Date 05/24/2024